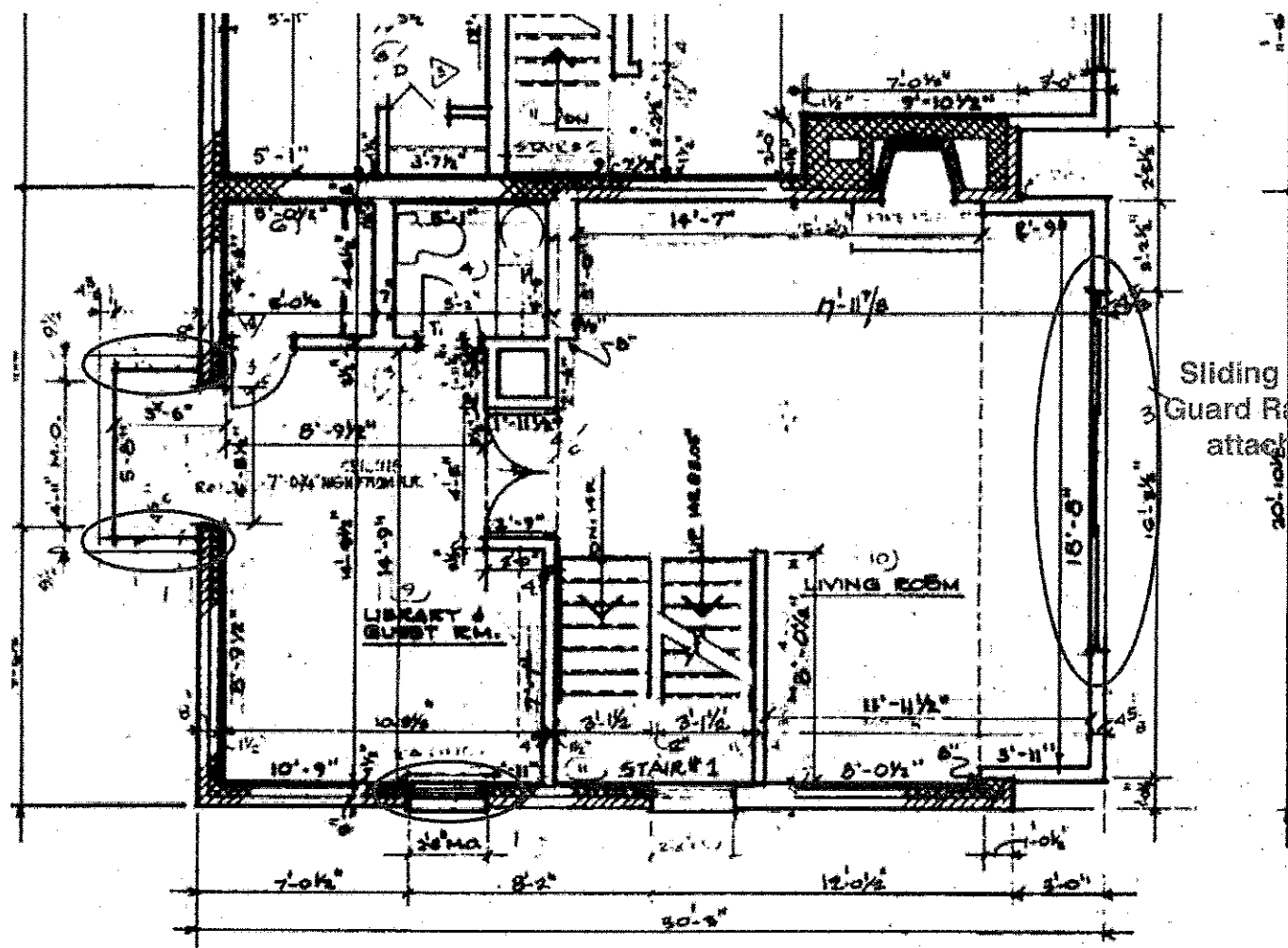
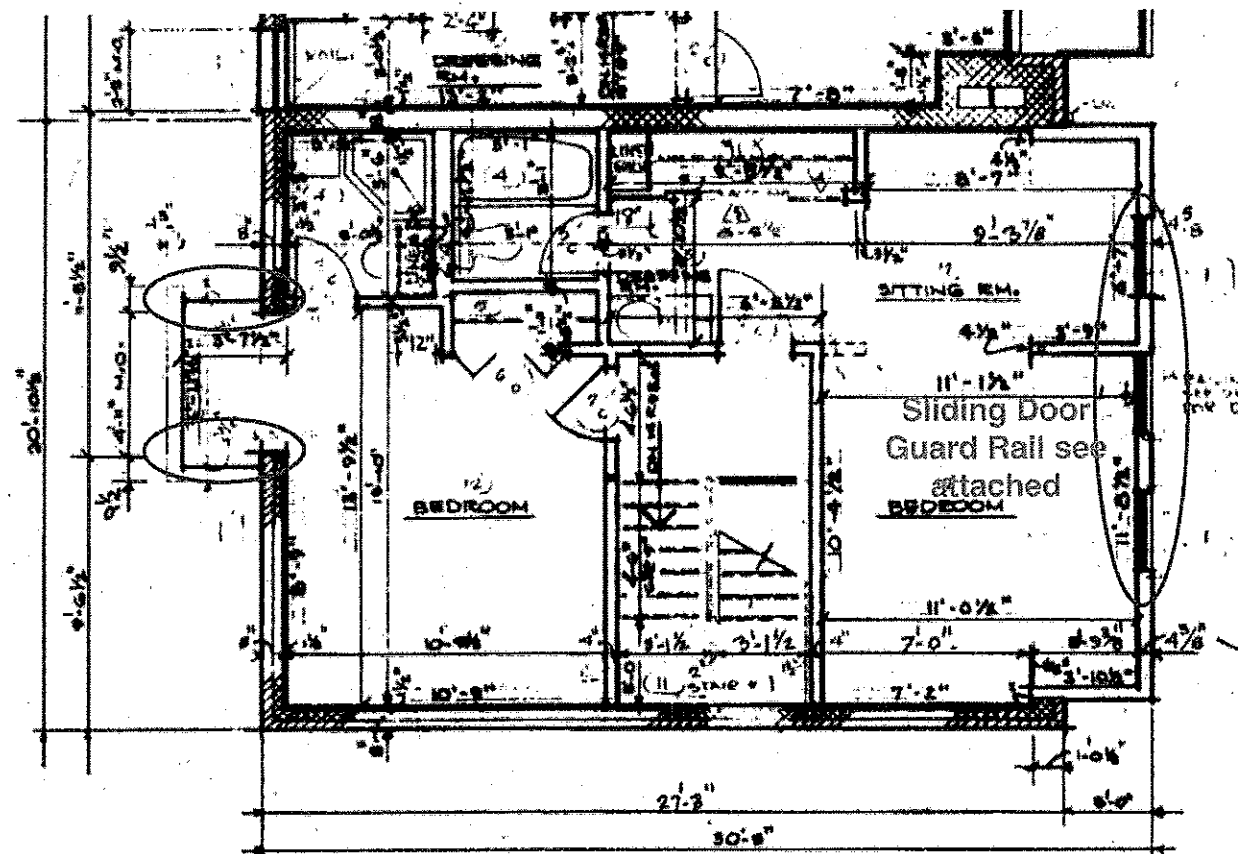


Windows with added child safety clips meeting section 312 for double hung windows requirement ASTM F 2090-08 and 10, specifications attached



**SECOND FLOOR PLAN (reverse)**  
SCALE 1/4"=1'-0"



**Third Floor Plan (reverse)**

Bid 21-0658

**Charles Gildea Unit 306 Permit Application October 25, 2021**