

E & S Inspection Survey

Submitted by: mdwaters_annapolis

Submitted time: Oct 15, 2021, 10:30:49 AM

Address

745 annapolis neck

Location of site

Lat: 38.95166 Lon: -76.49884



Date of Inspection

Oct 15, 2021, 9:47:00 AM

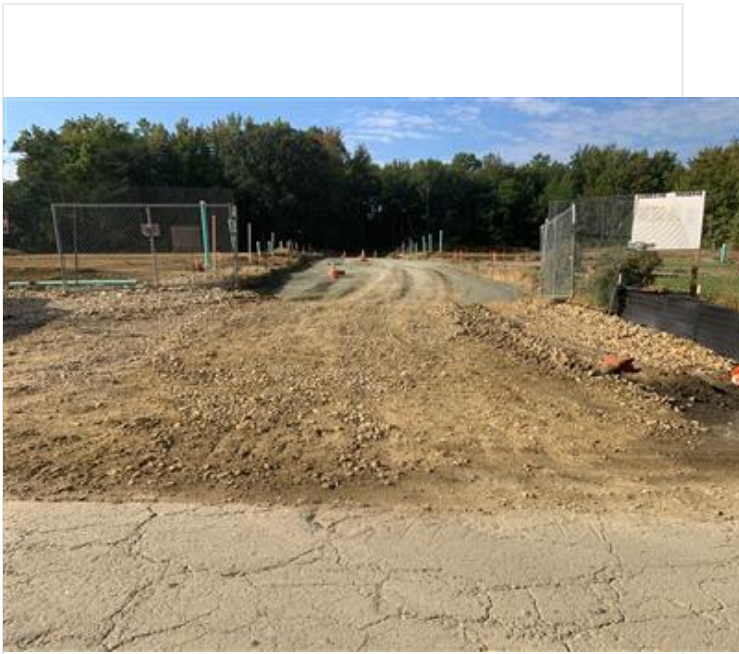
Site Type

Development

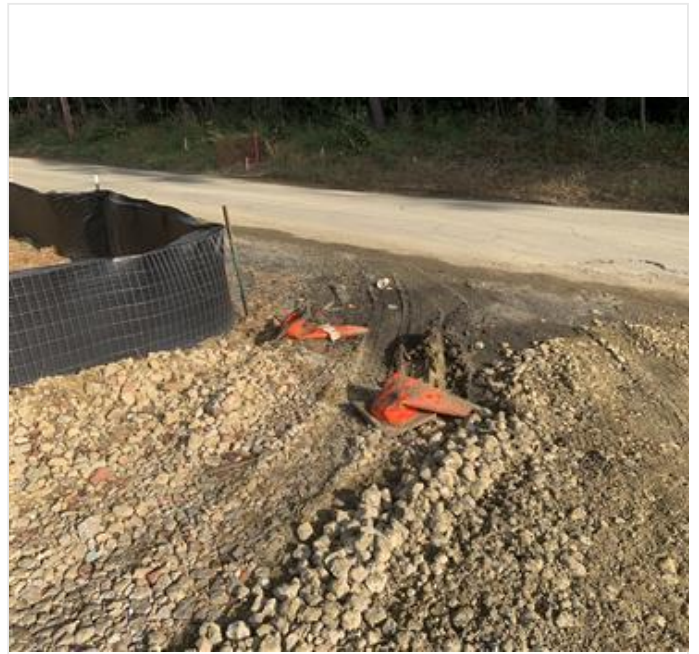
Development or Commercial



Development Inspection Images



development_inspection_images-20211015-134746.jpg



development_inspection_images-20211015-134817.jpg





development_inspection_images-20211015-134951.jpg



development_inspection_images-20211015-135407.jpg



development_inspection_images-20211015-141005.jpg



development_inspection_images-20211015-141140.jpg





development_inspection_images-20211015-141221.jpg



development_inspection_images-20211015-141237.jpg



development_inspection_images-20211015-141309.jpg



development_inspection_images-20211015-141827.jpg



development_inspection_images-20211015-141844.jpg



development_inspection_images-20211015-142343.jpg

Notes

**SCE 1 needs fresh stone.
Seed and straw areas as needed**