

E & S Inspection Survey

Submitted by: mdwaters_annapolis

Submitted time: Oct 27, 2021, 12:32:51 PM

Address

745 annapolis neck

Location of site

Lat: 38.94713 Lon: -76.49683



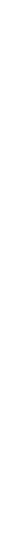
Date of Inspection

Oct 27, 2021, 11:10:00 AM

Site Type

Development

Development or Commercial



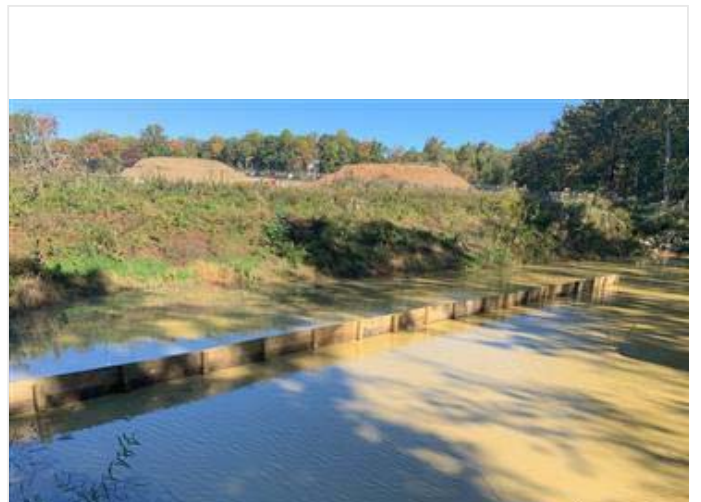
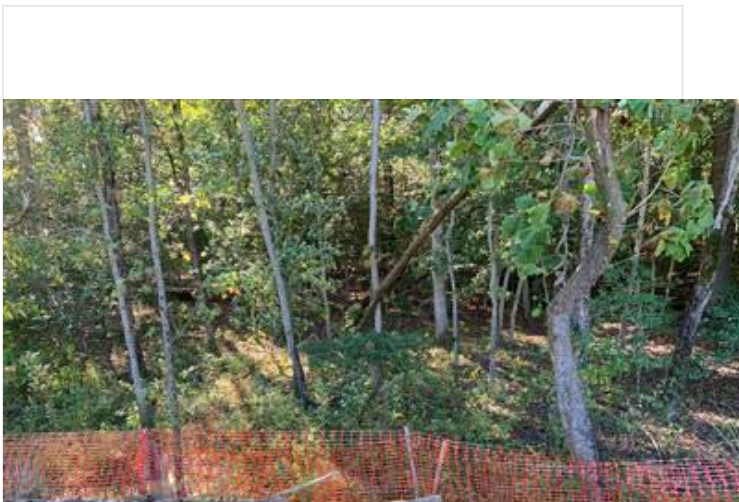
Development Inspection Images



development_inspection_images-20211027-151113.jpg



development_inspection_images-20211027-151132.jpg





development_inspection_images-20211027-151157.jpg



development_inspection_images-20211027-151207.jpg

Notes

The contractor will install another row of filter logs near the orange fence by the outfall from the sediment trap. They will also install a stone outlet structure before the entrance to the sediment trap with a plunge pool upstream. The water in the trap will be pumped up to another trap uphill in the near future.