

E & S Inspection Survey

Submitted by: mdwaters_annapolis

Submitted time: Oct 28, 2021, 1:41:52 PM

Address

745 annapolis neck

Location of site

Lat: 38.95042 Lon: -76.49654



Date of Inspection

Oct 28, 2021, 10:32:00 AM

Site Type

Development

Development or Commercial



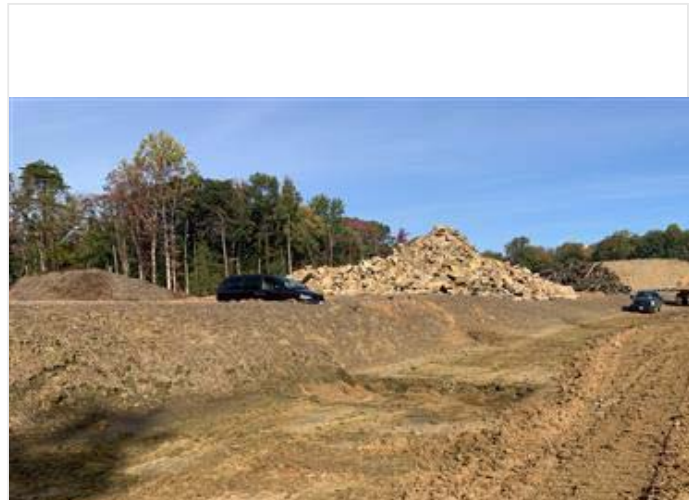
Development Inspection Images



development_inspection_images-20211028-144508.jpg



development_inspection_images-20211028-145717.jpg





development_inspection_images-20211028-145820.jpg



development_inspection_images-20211028-145933.jpg



development_inspection_images-20211028-145938.jpg



development_inspection_images-20211028-145959.jpg





development_inspection_images-20211028-150310.jpg



development_inspection_images-20211028-150656.jpg



development_inspection_images-20211028-150740.jpg



development_inspection_images-20211028-150750.jpg



development_inspection_images-20211028-150810.jpg



development_inspection_images-20211028-153756.jpg





dev...jpg



development_inspection_images-20211028-161018.jpg



development_inspection_images-20211028-161026.jpg



dev...jpg





development_inspection_images-20211028-162432.jpg

Notes

Site walk with MDE inspector.

Fix eroded area by concrete debris.

Trap was pumped down and pumped to other sediment trap.

Silt fence will be installed around top soil stock pile.

Additional filter logs installed at out fall.

SF repaired next to stockpile.

Stabilize eroded area near townhomes heading towards future SGW. Stabilization needed in trench upstream.

Dress up minor erosion by annapolis neck road and the townhomes.

Sce will be redone next week. It is stable now but it will be redone.