

E & S Inspection Survey

Submitted by: mdwaters_annapolis

Submitted time: Nov 1, 2021, 12:12:18 PM

Address

745 annapolis neck

Location of site

Lat: 38.94759 Lon: -76.49813



Date of Inspection

Nov 1, 2021, 11:36:00 AM

Site Type

Development

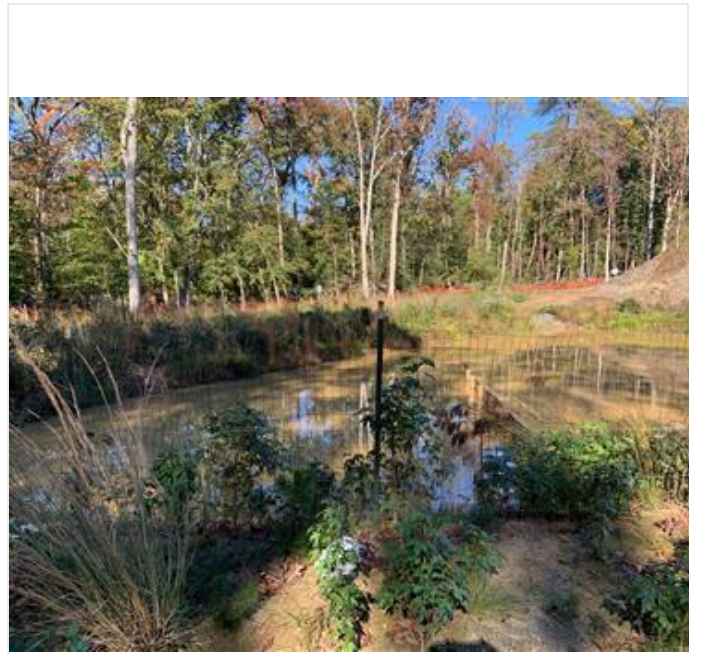
Development or Commercial



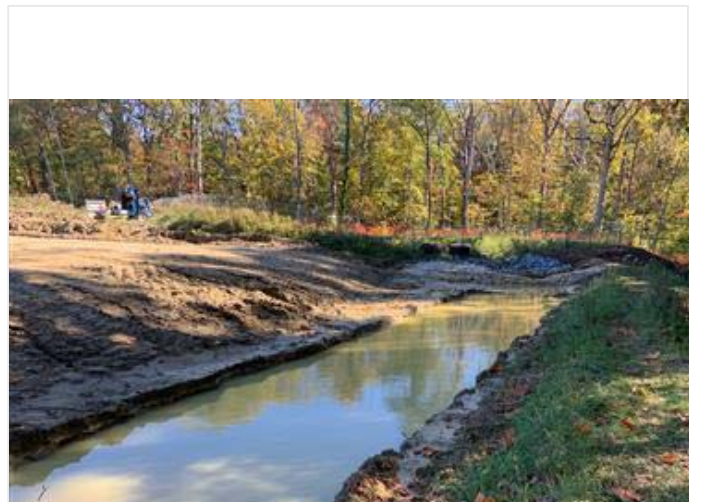
Development Inspection Images



development_inspection_images-20211101-153707.jpg



development_inspection_images-20211101-153715.jpg





development_inspection_images-20211101-153824.jpg



development_inspection_images-20211101-153831.jpg



development_inspection_images-20211101-153857.jpg



development_inspection_images-20211101-153913.jpg





development_inspection_images-20211101-154756.jpg



development_inspection_images-20211101-154923.jpg



development_inspection_images-20211101-154936.jpg