

E&S Inspections for sites greater than 1 acre

Submitted by: cwbrown_annapolis

Submitted time: Dec 9, 2021, 9:43:47 AM

General Information

Project Name

745 Annapolis Neck Road

Permittee

Reliable Contractors inc

Permit Number

Grd15-0026

Date of Inspection

Dec 9, 2021, 8:32:00 AM

Inspector

Charles Brown

Describe Present Phase of Construction

- **Rough Grading**

Type of Inspection (Check all that apply)

- **Pre-Storm Event**

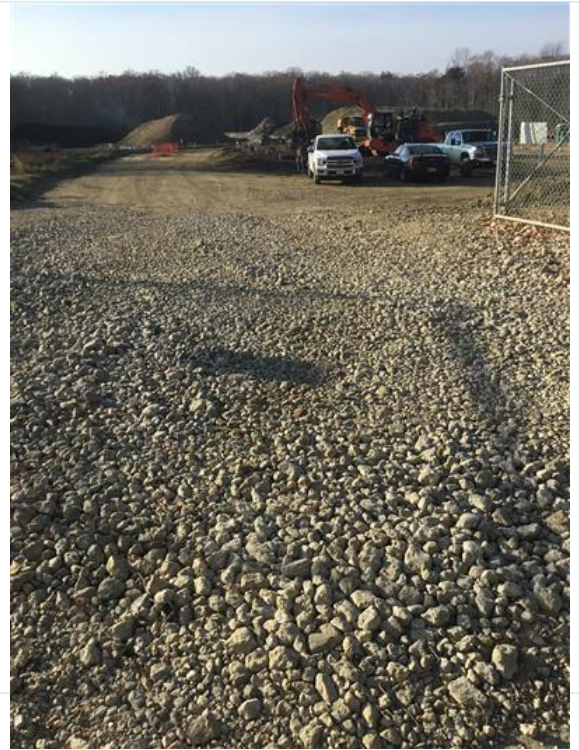
Previous Issues

N/A

Photos from inspection







Notes

Curb and gutter being installed on Annapolis Neck, stockpiles needs to be stabilized

Permit Coverage and Plans

NOI

Yes

Do the approved plans reflect current site conditions?

Yes

Site Documentation

Yes

Final Stabilization

No

Site Discharges

Yes

BMPs

Temporary stabilization in accordance with 26.17.01.07(B)(6)(f) including Haul Routes and Parking Pads

Yes

Maintenance Required?

No

Permanent stabilization in accordance with 26.17.01.07(B)(6)(f)

No

Maintenance Required?

No

Stockpile Protection

No

Maintenance Required?

Yes

Corrective Action - Stockpile

Needs to be stabilized

Date to be Completed

Dec 14, 2021

Natural Resource Protection

Yes

Maintenance Required?

No

Silt Fence

Yes

Maintenance Required?

No

Check dams, dikes, diversion ditches

Yes

Maintenance Required?

No

Storm drain inlet protection

Yes

Maintenance Required?

No

Stabilized Construction Entrance

Yes

Maintenance Required?

No

Sediment Basins/Traps

Yes

Maintenance Required?

No

Outfall Protection

Yes

Maintenance Required?

No

Trash/Litter

Yes

Maintenance Required?

No

Washout Facilities

No

Maintenance Required?

No

Vehicle Areas

Yes

Maintenance Required?

No

Potential Contaminates

Yes

Maintenance Required?

No

Non-Stormwater Discharges

Yes

Maintenance Required?

No

Dust Control

Yes

Maintenance Required?

No

Roadways Swept

Yes

Maintenance Required?

No

Turbidity Curtain

Not Used

Maintenance Required?

No

Discharge of significant amounts of sediment

Discharge to Surface Waters

No

Earth slides or mud flows

No

Concentrated Flows

No

Turbid Flows

No

Sediment to unprotected inlets

No

Sediment on Roads

No

Sediment outside Construction LOD

No

MS4 Discharges

No