

# E&S Inspections for sites greater than 1 acre

Submitted by: cwbrown\_annapolis

Submitted time: Jan 12, 2022, 10:50:23 AM

## General Information

Project Name

**Annapolis Neck Road**

Permittee

**Reliable Contractors Inc**

Permit Number

**Grd15-0026**

Date of Inspection

**Jan 12, 2022, 10:22:00 AM**

Inspector

**Charles Brown**

Describe Present Phase of Construction

- **Rough Grading**

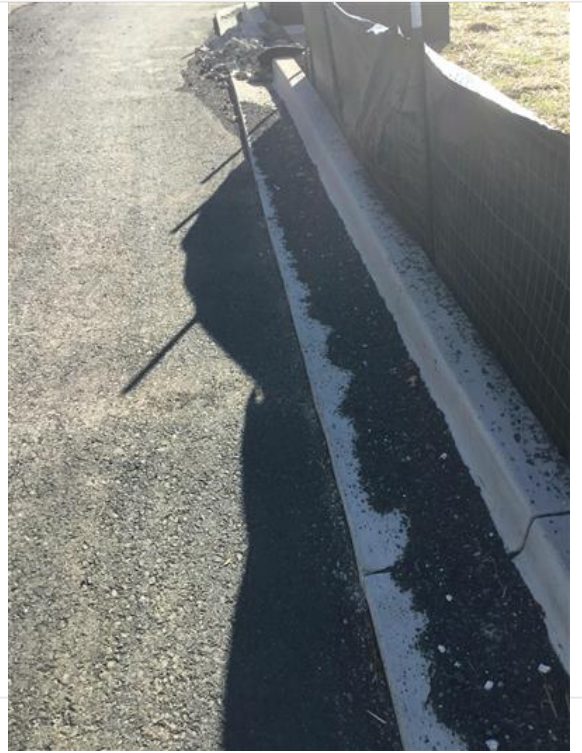
Type of Inspection (Check all that apply)

- **Weekly Routine**

Previous Issues

**N/A**

Photos from inspection







Notes

**Talked to the Reliable Foreman on site about Sce, and Annapolis Neck Road being maintained daily if not Citations will be issued. stock piles are in use**

Permit Coverage and Plans

NOI

**Yes**

Do the approved plans reflect current site conditions?

**Yes**

Site Documentation

**Yes**

Final Stabilization

**No**

Site Discharges

**Yes**

BMPs

Temporary stabilization in accordance with 26.17.01.07(B)(6)(f) including Haul Routes and Parking Pads

**Yes**

Maintenance Required?

**No**

Permanent stabilization in accordance with 26.17.01.07(B)(6)(f)

**No**

Maintenance Required?

**No**

Stockpile Protection

**Yes**

Maintenance Required?

**Yes**

Corrective Action - Stockpile

**Rsf needs to be installed along building pads beside stock pile far left corner**

Date to be Completed

**Jan 17, 2022**

Natural Resource Protection

**Yes**

Maintenance Required?

**No**

Silt Fence

**Yes**

Maintenance Required?

**No**

Check dams, dikes, diversion ditches

**Yes**

Maintenance Required?

**No**

Storm drain inlet protection

**Yes**

Maintenance Required?

**No**

Stabilized Construction Entrance

**Yes**

Maintenance Required?

**Yes**

Corrective Action - Stabilized Construction Entrance

**Needs to be refreshed**

Date to be Completed

**Jan 13, 2022**

Sediment Basins/Traps

**Yes**

Maintenance Required?

**No**

Outfall Protection

**Yes**

Maintenance Required?

**No**

Trash/Litter

**Yes**

Maintenance Required?

**No**

Washout Facilities

**No**

Maintenance Required?

**No**

Vehicle Areas

**Yes**

Maintenance Required?

**No**

Potential Contaminates

**Yes**

Maintenance Required?

**No**

Non-Stormwater Discharges

**Yes**

Maintenance Required?

**No**

Dust Control

**Yes**

Maintenance Required?

**No**

Roadways Swept

**Yes**

Maintenance Required?

**No**

Turbidity Curtain

**Not Used**

Maintenance Required?

**No**

Discharge of significant amounts of sediment

Discharge to Surface Waters

**No**

Earth slides or mud flows

**No**

Concentrated Flows

**No**

Turbid Flows

**No**

Sediment to unprotected inlets

**No**

Sediment on Roads

**No**

Sediment outside Construction LOD

**No**



MS4 Discharges

**No**