

E&S Inspections for sites greater than 1 acre

Submitted by: cwbrown_annapolis

Submitted time: Dec 15, 2021, 10:40:47 AM

General Information

Project Name

39 Hudson Street

Permittee

City of Annapolis

Permit Number

Grd17-0040

Date of Inspection

Dec 15, 2021, 10:06:00 AM

Inspector

Charles Brown

Describe Present Phase of Construction

- **Rough Grading**

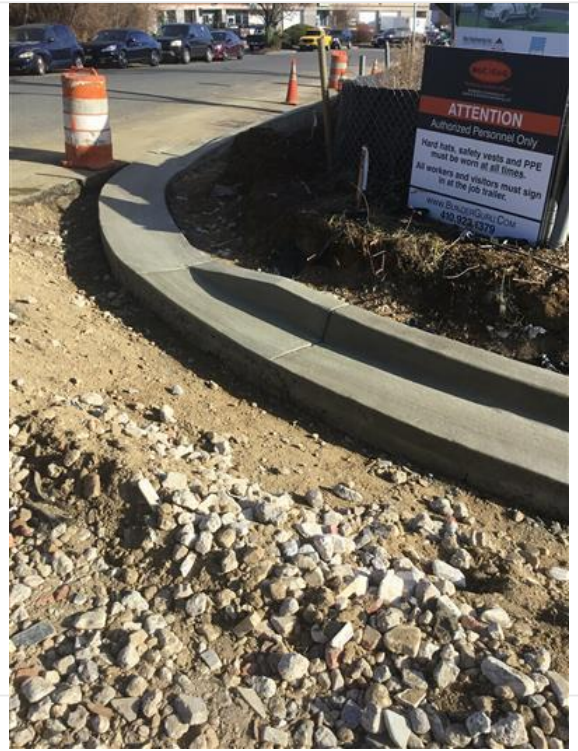
Type of Inspection (Check all that apply)

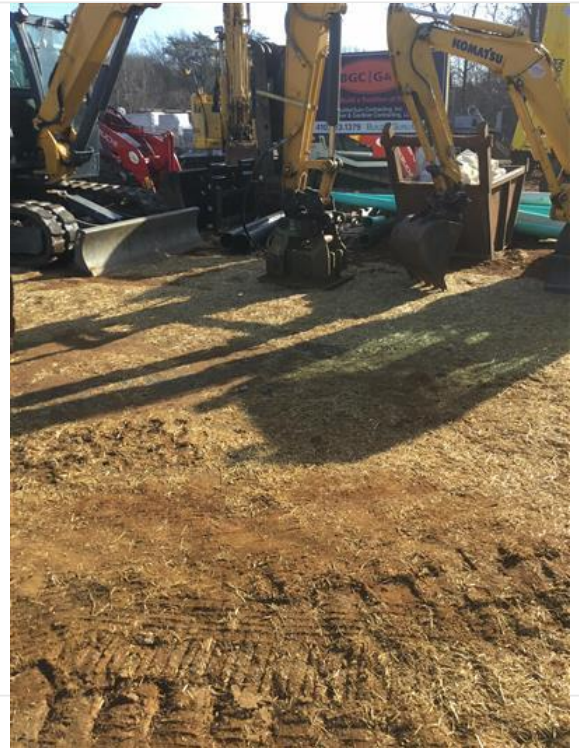
- **Weekly Routine**

Previous Issues

N/A

Photos from inspection





Notes

Putting in curb and gutter being installed

Permit Coverage and Plans

NOI

Yes

Do the approved plans reflect current site conditions?

Yes

Site Documentation

Yes

Final Stabilization

No

Site Discharges

Yes

BMPs

Temporary stabilization in accordance with 26.17.01.07(B)(6)(f) including Haul Routes and Parking Pads

Yes

Maintenance Required?

No

Permanent stabilization in accordance with 26.17.01.07(B)(6)(f)

No

Maintenance Required?

No

Stockpile Protection

Yes

Maintenance Required?

No

Natural Resource Protection

Yes

Maintenance Required?

No

Silt Fence

Yes

Maintenance Required?

No

Check dams, dikes, diversion ditches

Yes

Maintenance Required?

No

Storm drain inlet protection

Yes

Maintenance Required?

No

Stabilized Construction Entrance

Yes

Maintenance Required?

No

Sediment Basins/Traps

Yes

Maintenance Required?

No

Outfall Protection

Yes

Maintenance Required?

No

Trash/Litter

Yes

Maintenance Required?

No

Washout Facilities

Yes

Maintenance Required?

Yes

Corrective Action - Washout Facilities

Needs to add washout facilities on site

Date to be Completed

Dec 20, 2021

Vehicle Areas

Yes

Maintenance Required?

No

Potential Contaminates

Yes

Maintenance Required?

No

Non-Stormwater Discharges

Yes

Maintenance Required?

No

Dust Control

Yes

Maintenance Required?

No

Roadways Swept

Yes

Maintenance Required?

No

Turbidity Curtain

Not Used

Maintenance Required?

No

Discharge of significant amounts of sediment

Discharge to Surface Waters

No

Earth slides or mud flows

No

Concentrated Flows

No

Turbid Flows

No

Sediment to unprotected inlets

No

Sediment on Roads

No

Sediment outside Construction LOD

No

MS4 Discharges

No